

Maajii-Ojibwemowag
(They Begin to Speak Ojibwe)

Asemaa



Stories of the Plants:
A Zhaawanong Book



**Asemaa is very important to the Anishinaabe people.
We use it to say our prayers and do our ceremonies.**

I remember my mother asking me to bring asemaa to an elder for a memorial wiikongewin for my father.



And later that year, we gave asemaa to hold a naming ceremony for our daanis.



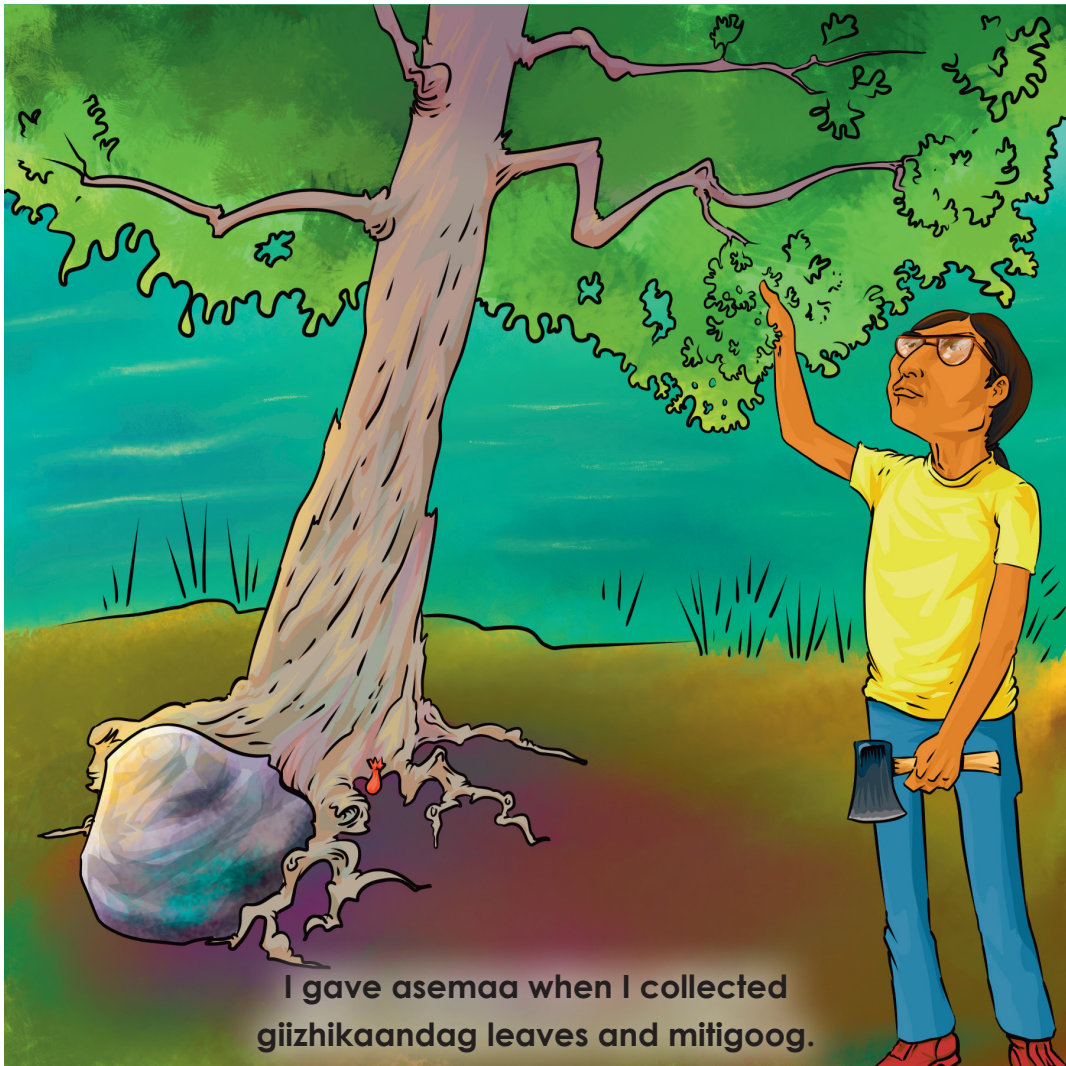
Gibiindaakoojigemin for many things.

**This is the way we show respect for the spirit of the plant
or the animal. Apiitendaagwad.**

**Asemaa is a sacred mashkiki for our people.
It is the way we offer thanks and speak with the Gichi-manidoo.**



Tobacco ties can be used to offer asemaa, like this miskwaa one.



I gave asemaa when I collected
giizhikaandag leaves and mitigoog.



I was taught by my elders to put giizhikaandag leaves in my makizinan to feel protected when nimbimose in new places.



I used the giizhikaandag mitigoog
to carve a dikinaagan for my daughter.

My wife offers asemaa when harvesting wiingashk.



Mino-maagwad!

She braids the wiingashk and gives it to inawemaaganag as gifts.



They say miigwech!



**We offer asemaa when we gather wiinisigobag and berries.
Their leaves are shiny and dark aniibiishan-inaande.**



**We drink wiinisigobag aniibiish and eat wiishkobi-bakwezhigan
with wintergreen berries on top.**

I offer asemaa when picking wewaagaagin near endaayaan.



The wewaagaagin make good wewaagaagin nabooob.



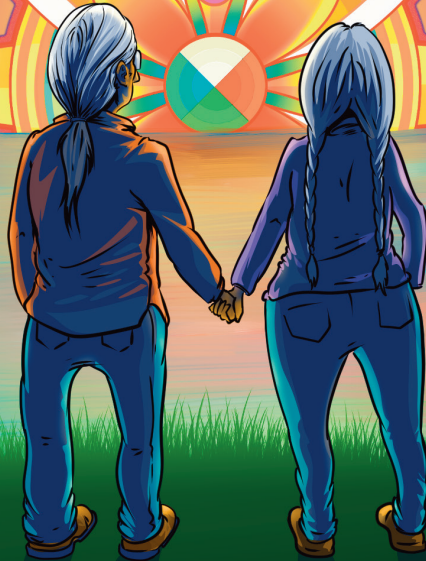
Minopogwad!

Using these mashkikiwan help your spirit feel good.



It is good to offer asemaa endaso-giizhik.

Remember, aabaji' asemaa in a good way.



Mii iw!



Maajii-Ojibwemowag (They Begin to Speak Ojibwe)



Zhaawanong Book Set:
Stories of the Plants



Tribal Storytellers -

Anabiikwe (Cleo White) ~White Earth Nation

Mezinaanakwad (Dennis White)

~Lac Courte Oreilles Band of Lake Superior Chippewa

Illustration and Layout - Niyogiizhig (Wesley Ballinger)

~Mille Lacs Band of Ojibwe

Language/Outreach Specialist - Gizhibaawaanakwadook (Misty Peterson)

~Fond du Lac Band of Lake Superior Chippewa and Ontario First Nation, Couchiching

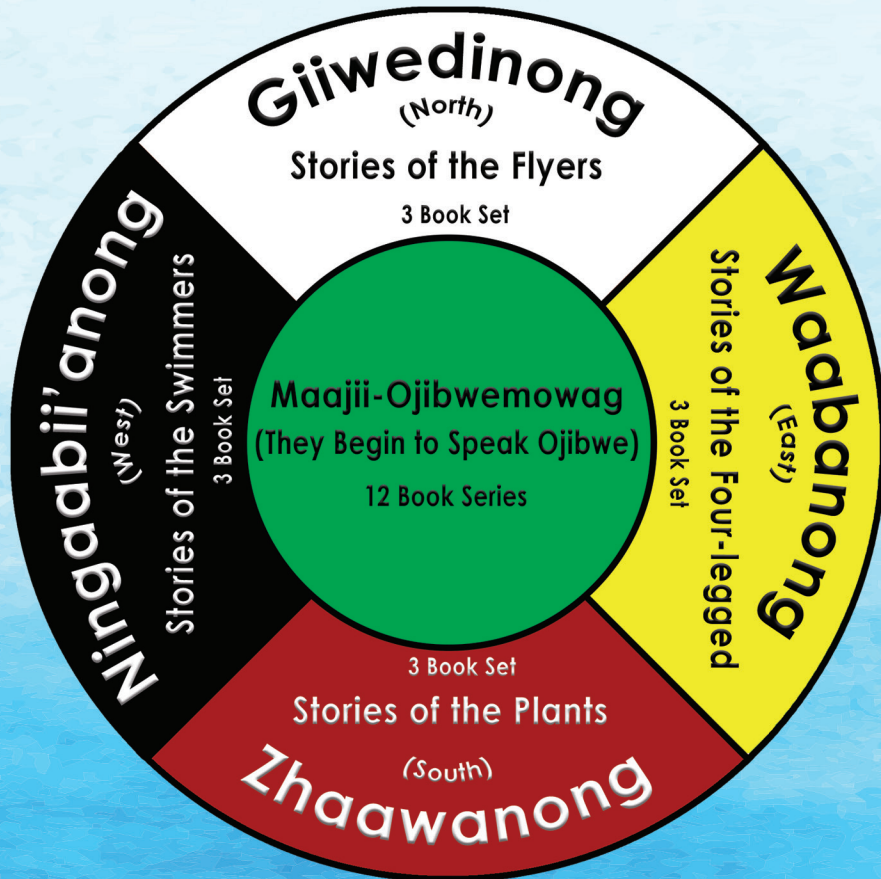
Intermedia Web Design and Layout- Melissa Maund Rasmussen

Project Director - Animikii Ikwe (LaTisha Coffin)

~Bad River Band of Lake Superior Chippewa

<https://glifwc-inwe.com>





<https://glifwc-inwe.com>



This publication was funded through a grant from the Administration for Native Americans (ANA), ACF, U.S. Department of Health and Human Services.